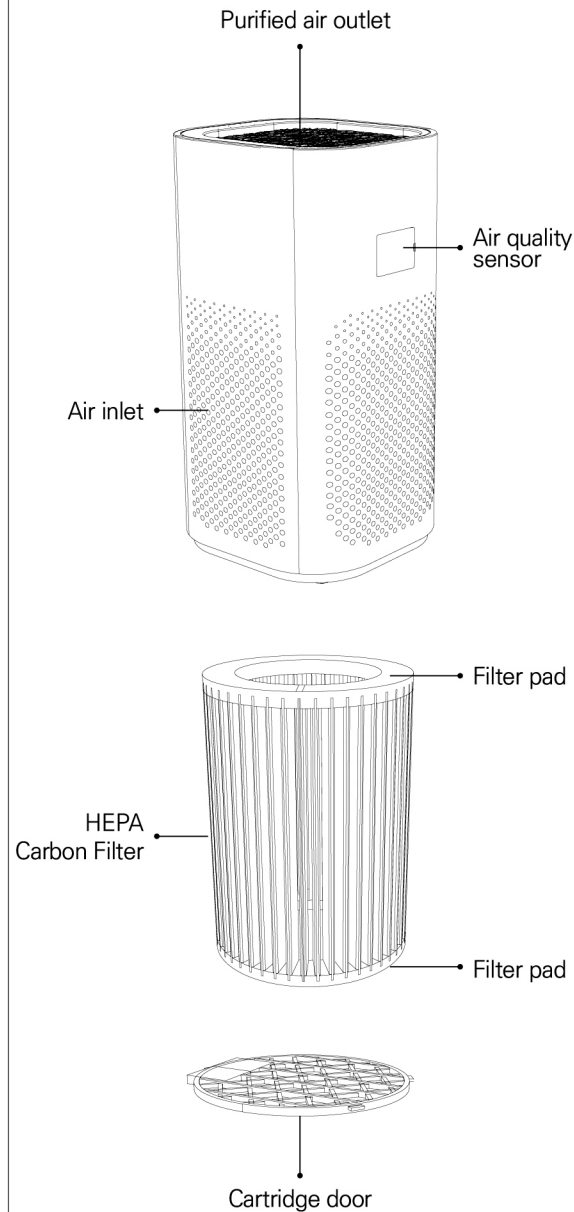


Product appearance and structure



Life Support Robot Center 203-1, Gwangju Techno Park,
333, Cheomdangwagi-ro, Buk-gu, Gwangju, Republic of Korea.
E-mail: baramioh@gmail.com

AIR CLEANER BARAMI-7 INDOOR AIR PURIFIER

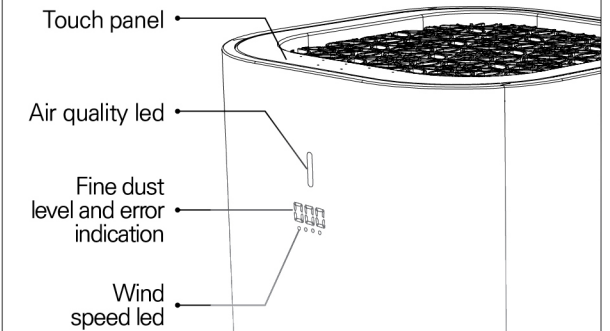
Feel the extra-fresh air in your house with BARAMI.



Precautions

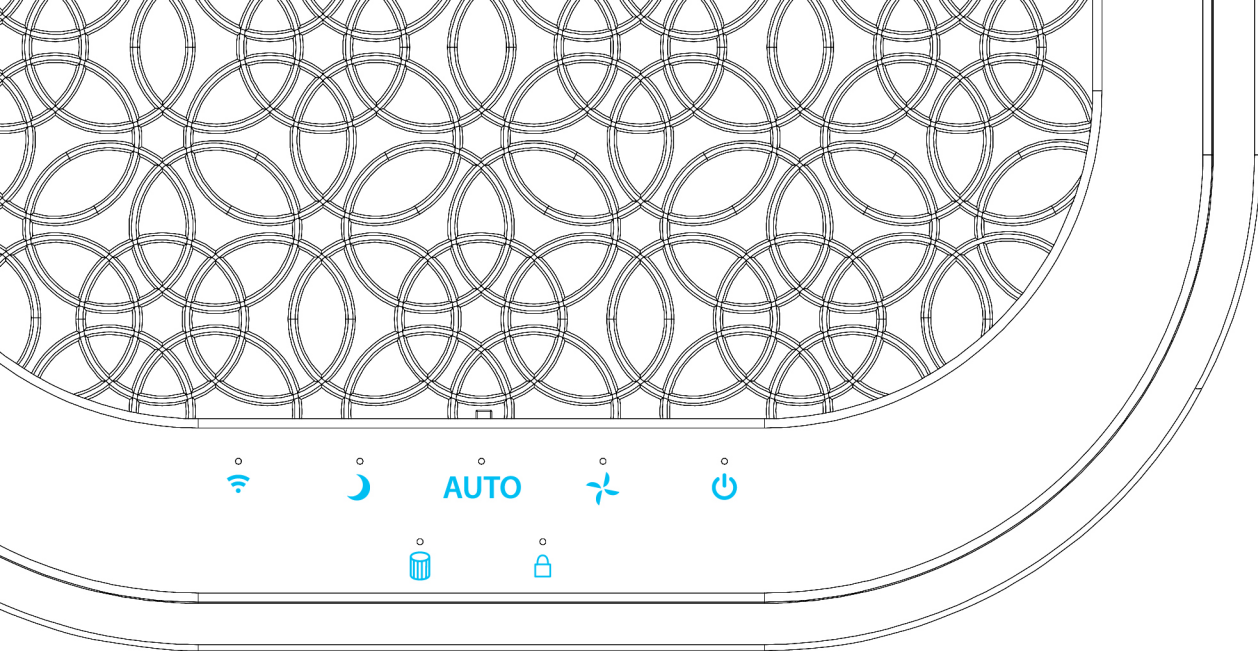
- This appliance can be used by children aged from 8 years and above and persons with reduced physical, sensory or mental capabilities or lack of experience and knowledge if they have been given supervision or instruction concerning use of the appliance in a safe way and understand the hazards involved.
- Children shall not play with the appliance.
- Cleaning and user maintenance shall not be made by children without supervision.

Indicator and panels



Technical data sheet

| Model Name | BA7-2001A | |
|---|-----------------------------|---|
| Classification | Unit | Data |
| Cleaning Capacity (PM2.5 Fine Dust) | m ³ /hour (CADR) | 350 |
| Cleaning Capacity (Formaldehyde) | m ³ /hour (CADR) | 100 |
| Optimum Usable Area | m ² | 24 ~ 42 |
| Anion Generation Rate | ea/cm ³ | 3,000,000 or less |
| Dust Collection Efficiency (E12 Series) | % | 99.5 |
| Harmful Gass Deodorizing Efficiency | % | 70 or more |
| Noise | dB | 35 (low speed) ~ 65 (ultrahigh speed) |
| Rated Voltage (Current) | V(A) | DC24V (1.5A) |
| Rated Frequency | Hz | 60 |
| Rated Power Consumption | W | 30 |
| Ozone Generation Rate | ppm | 0 |
| Filter Replacement Cycle | Hour | 3,000 |
| Weight | Kg | 4.6 |
| Material Symbol | - | ABS colophony |
| Size | mm | 265 (width)x260 (length) x489 (height) |
| Service Temperature | °C | 0 ~ 40 |
| Service Humidity | % | 70 or less |



01 Simple operation

By using the Touch Panel, anyone can easily operate.

Anion Mode

Touch anion mode once, it will work and touch again to exit anion mode. It generates 3 million anions per minute to remove airborne pollutants.

Sleep Mode

A short press with power on enters sleep mode and the screen display turns on again when the button is pressed in sleep mode.

Auto Mode **AUTO**

A short press with power on enters auto mode. In the auto mode, it is kept at the initial measurement for 3 minutes. After 3 minutes, the air quality measurement is determined and the mode is switched.

Power Button

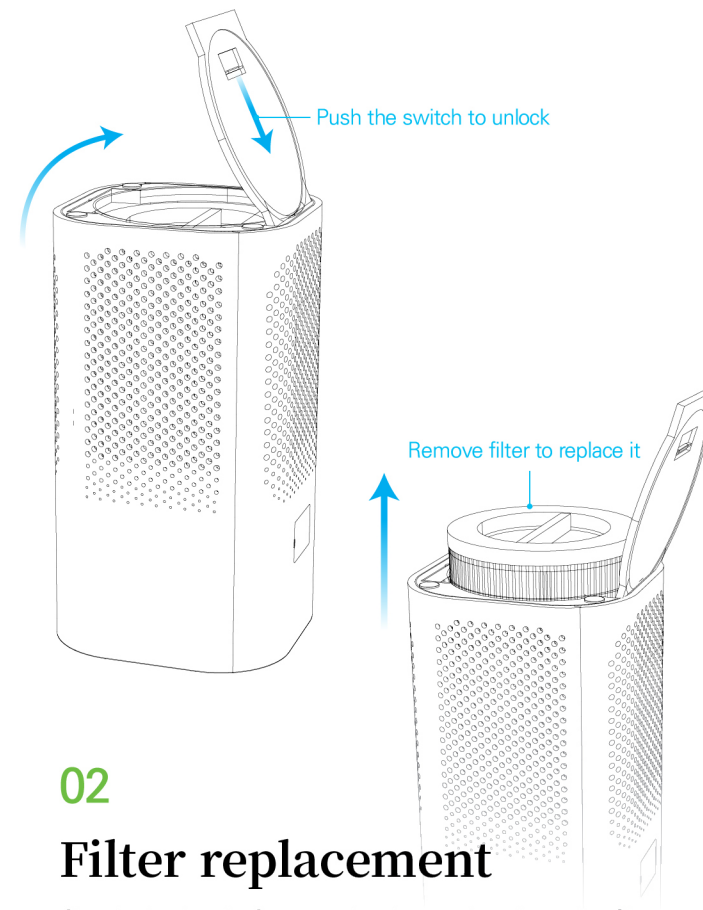
A short touch or plugging in will turn the device on, after 0.5 seconds of notification, it operates in Auto mode. Press for 1 second to turn the device off.

Manual Mode

With the power on, a short press will adjust the wind speed gear position.

Filter Replacement

The filter replacement cycle is 3,000 hours, and when the red light turns on, it is time to replace the filter. Pressing the Sleep Button and Aut Mode Button simultaneously for 3 seconds dismisses the filter alert and recalculates the filter replacement time.



02

Filter replacement

Check the level of contamination and replace the filter. Please stop the operation of the device, turn the power off before replacing the filter.

- The orange LED turns on every 1 second when the filter needs to be changed.
- If the filter is not inserted in the device, the red LED turns on every 1 second.

How to replace

Push the switch at the bottom in the direction of the arrow to unlock the cartridge cover. Open the cover, remove the used filter, replace it with a new filter, and close the cartridge cover.

03




Automatic air quality measurement

It is equipped with an air quality sensor and automatically manages the air condition in a suitable mode.

Air quality LED

Operation Mode

The air quality is displayed in each color based on PM2.5 figures.

-  **Low speed**
based on PM2.5 figure, below 30(good)
-  **High speed**
based on PM2.5 figure, 31~69(normal)
-  **Ultrahigh speed**
based on PM2.5 figure, 70 or higher(bad)

Detailed functions

- Less noisy compared to other air cleaner.
- Air quality control and manual setting function according to air condition.
- Remove air particulate matter and fine dust by inhaling them with HEPA filters.
- Neutralize and remove air cation contaminants with an anion.
- Remove airborne suspended substances (e.g. bacteria, microwaves, flower powder, etc.) by inhaling fine, ultrafine dust.

